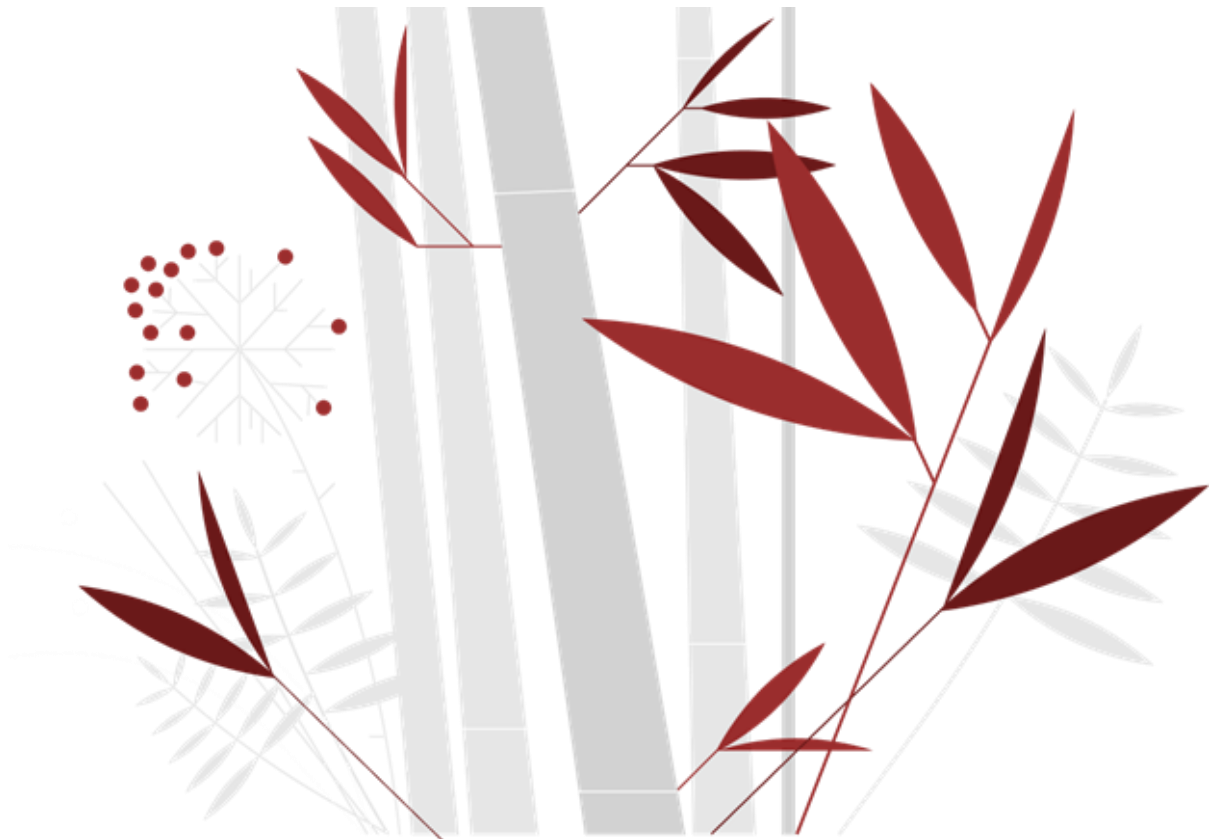


CONFIGURATION DES SAUVEGARDES

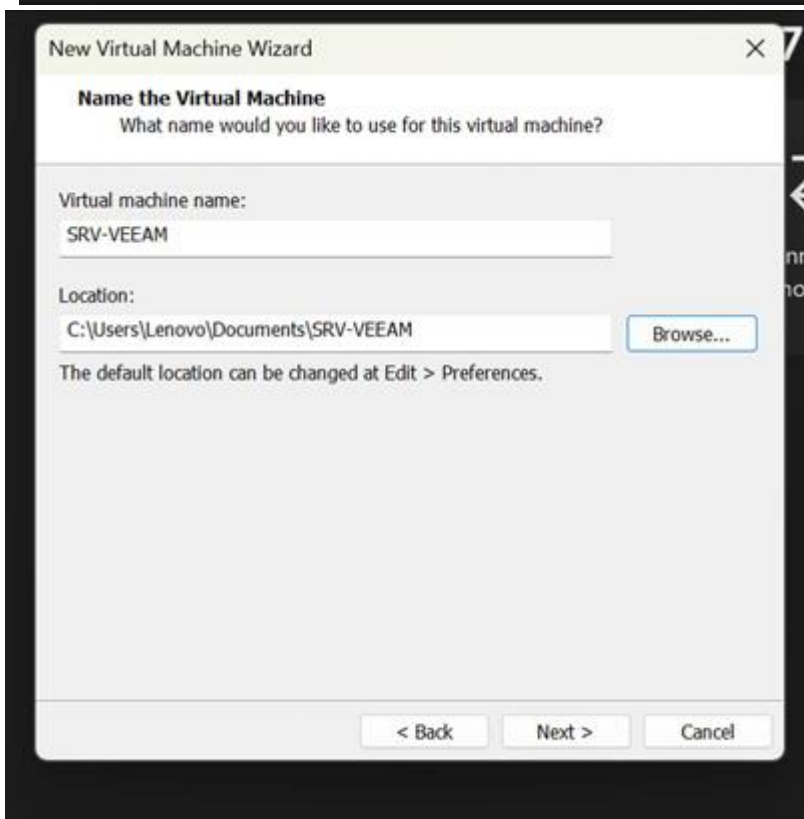
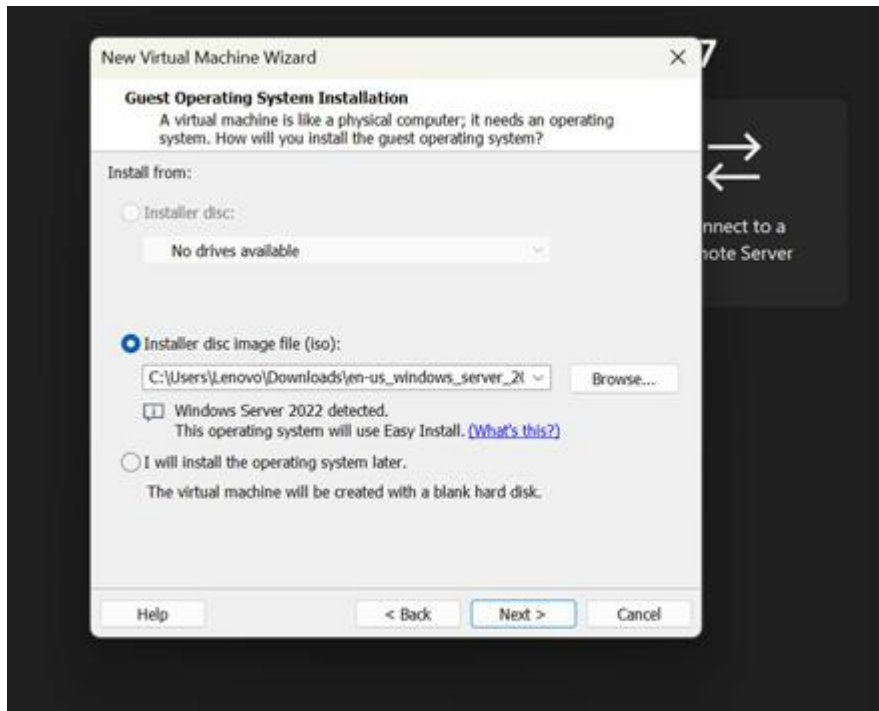
Compétence ciblée : Gérer les sauvegardes

Remi POULET-DENECQUE

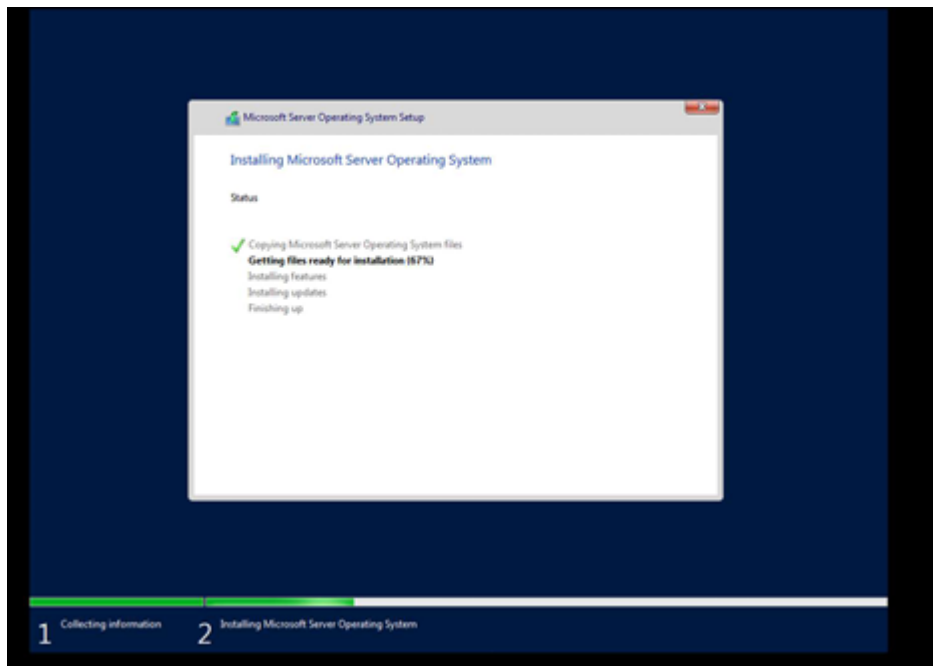
Gaston Berger



Installation d'un Windows Server 2022 avec GUI



Ici, je crée une VM Windows Server 2022 avec interface graphique qui nous servira de serveur de sauvegarde grâce à Veeam



Installation de Veeam :

Veeam Backup & Replication *Community Edition* [Télécharger](#) [Documentation sur les produits](#)

Essayez gratuitement

En téléchargeant Veeam products, vous acceptez le [Contrat de licence logicielle utilisateur de Veeam](#).

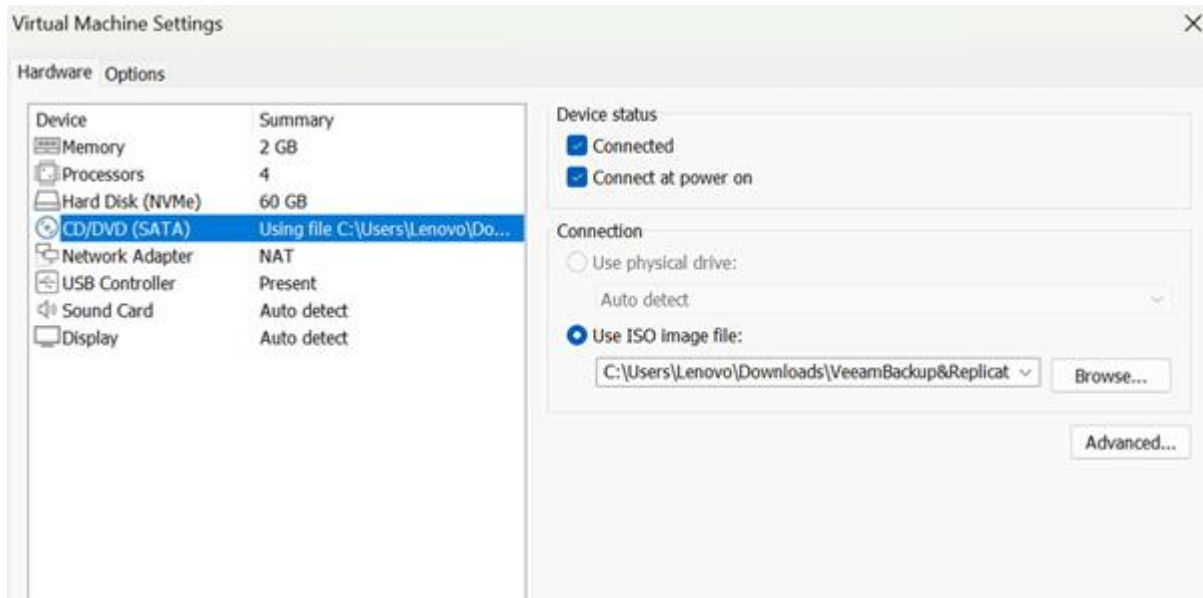
Historique des téléchargements récents ✕

VeeamBackup&Replication_12.3.1.1139_20250331.iso
331.iso
10.0/11.0 Go - 4 minutes restantes

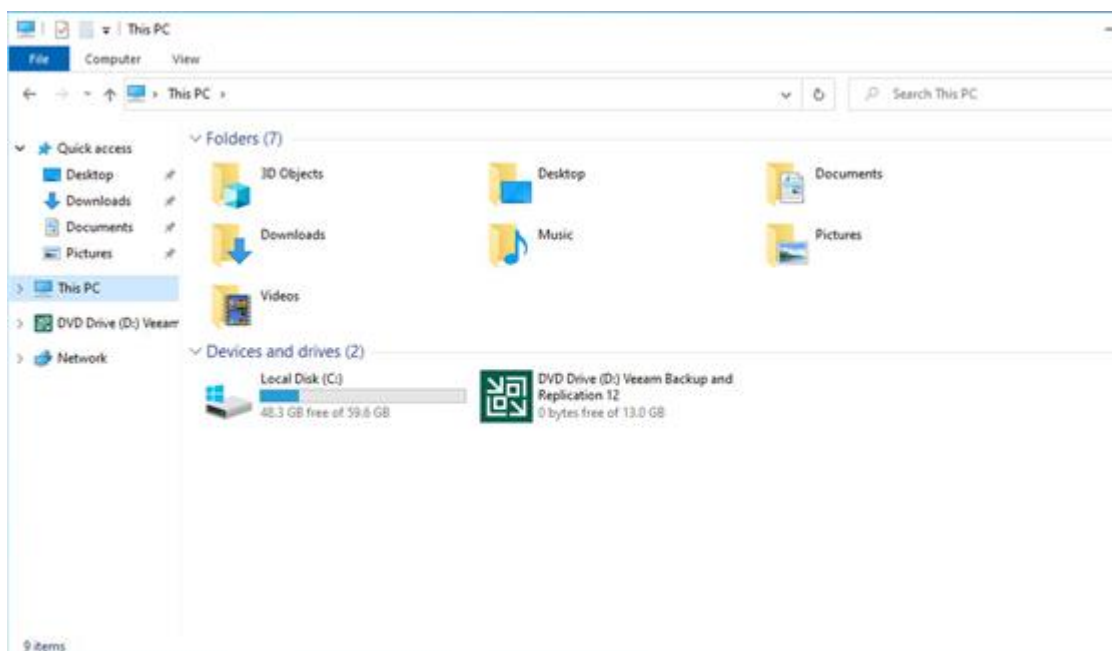
[Historique complet des téléchargements](#)

PRODUITS	NOTES DE PUBLICATION	TÉLÉCHARGER
<p>Veeam Backup & Replication <i>Community Edition</i></p> <p>Remarque : vous voulez disposer d'un support technique 24.7.365 ou protéger un nombre supérieur de workloads ? Veeam Backup Essentials est la solution idéale. Recevoir les tarifs maintenant.</p>	<p> Notes de publication</p> <p>27 mars 2025</p>	<p style="text-align: center;">TÉLÉCHARGER</p> <p style="text-align: center;">SITE DE TÉLÉCHARGEMENT SECONDAIRE →</p> <p style="text-align: center;">Version: 12.3.1.1139 Taille: 13 GB</p> <p style="text-align: center;">MD5: aeeb...f78a </p> <p style="text-align: center;">SHA-1: f4fb...1d4e </p>

J'installe l'ISO de la version gratuite de Veeam sur mon poste :



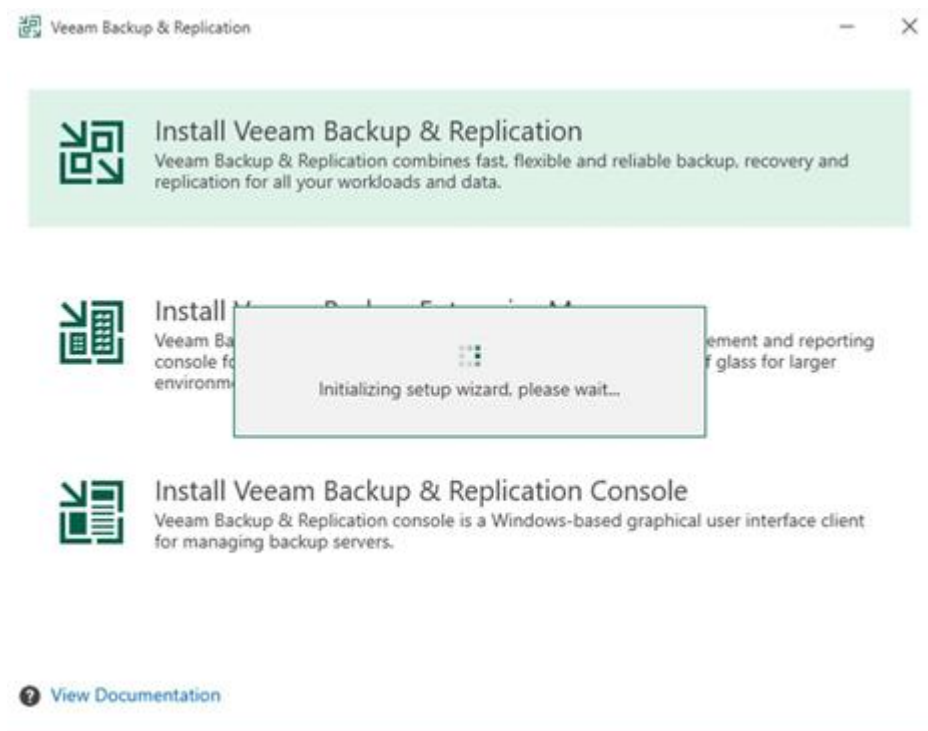
ISO que j'injecte dans ma VM après la fin de l'installation de mon serveur Windows



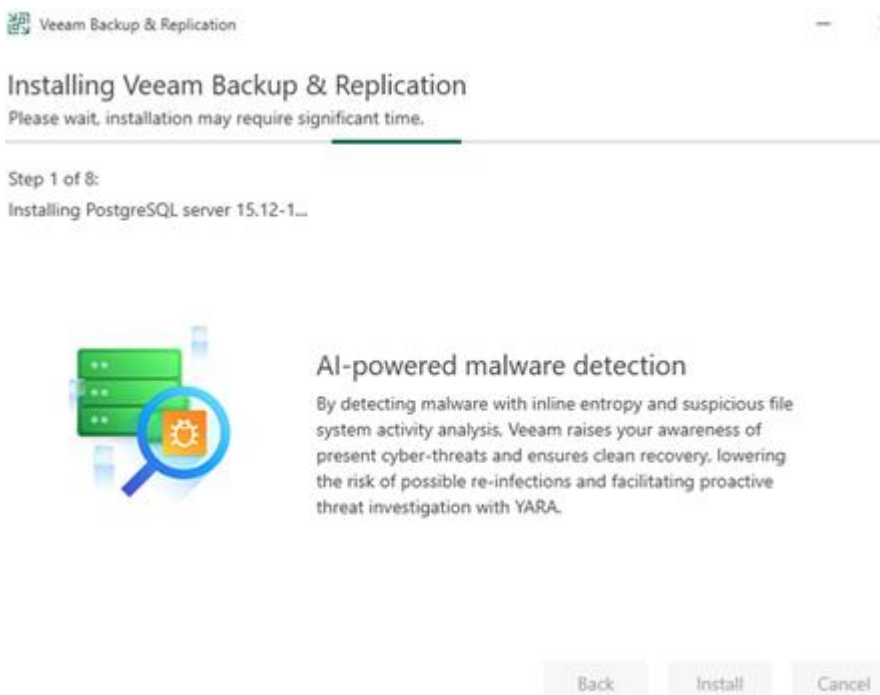
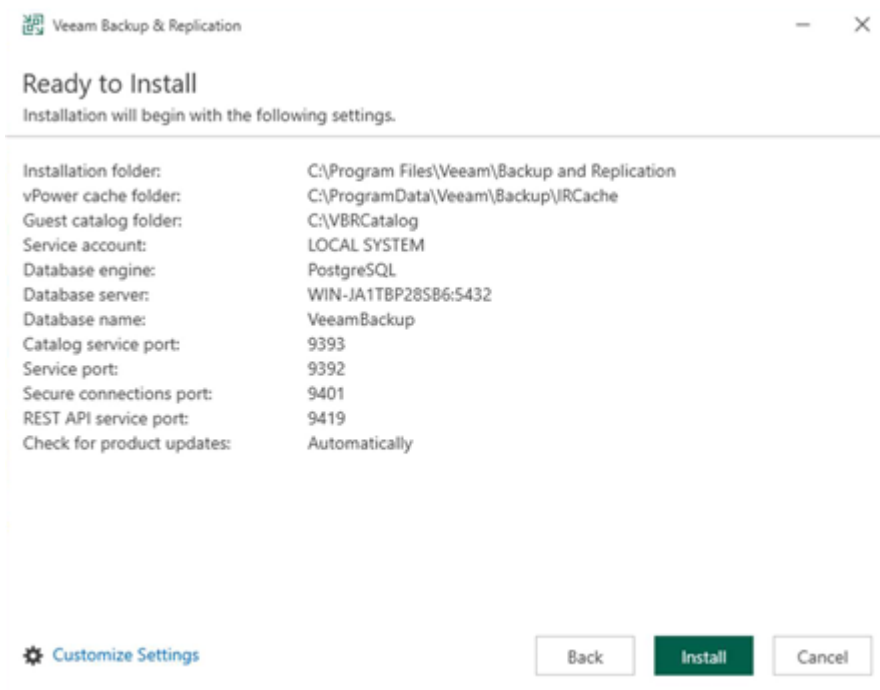
On l'ouvre et on clique sur « Setup »:

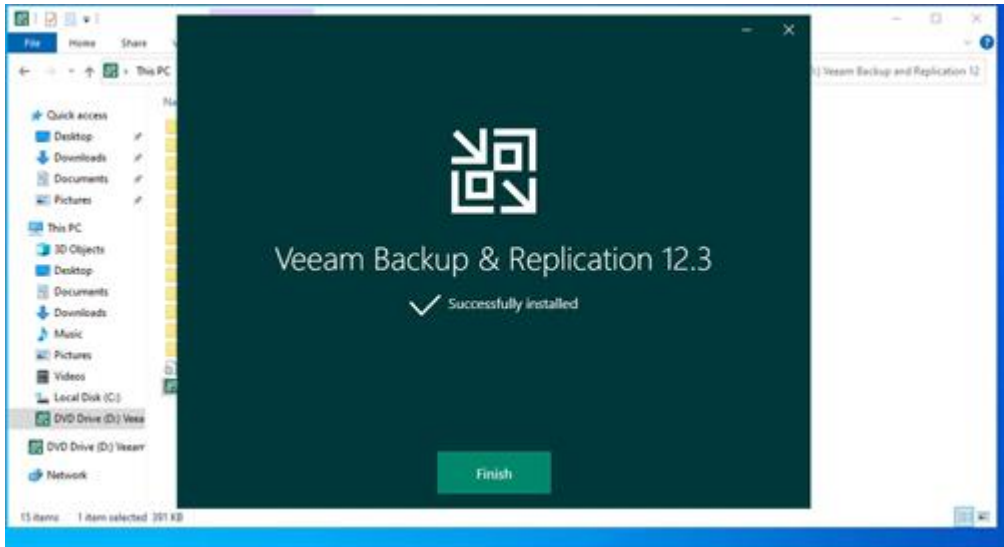


Puis sur « Install »

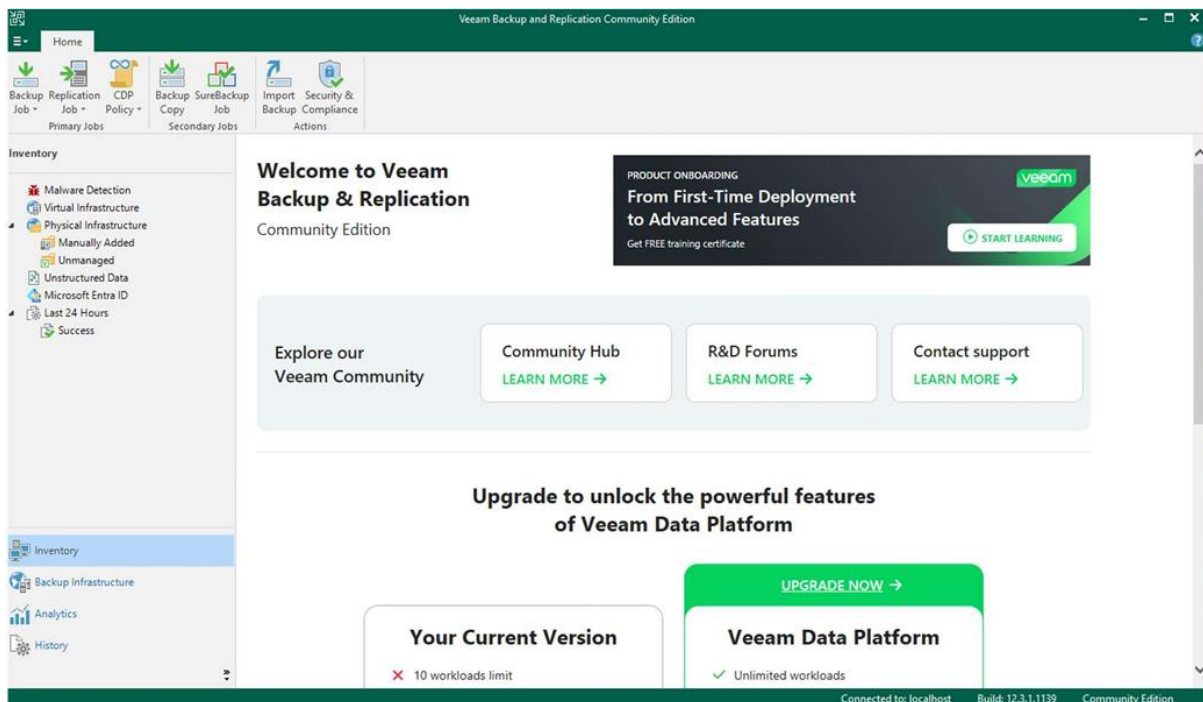


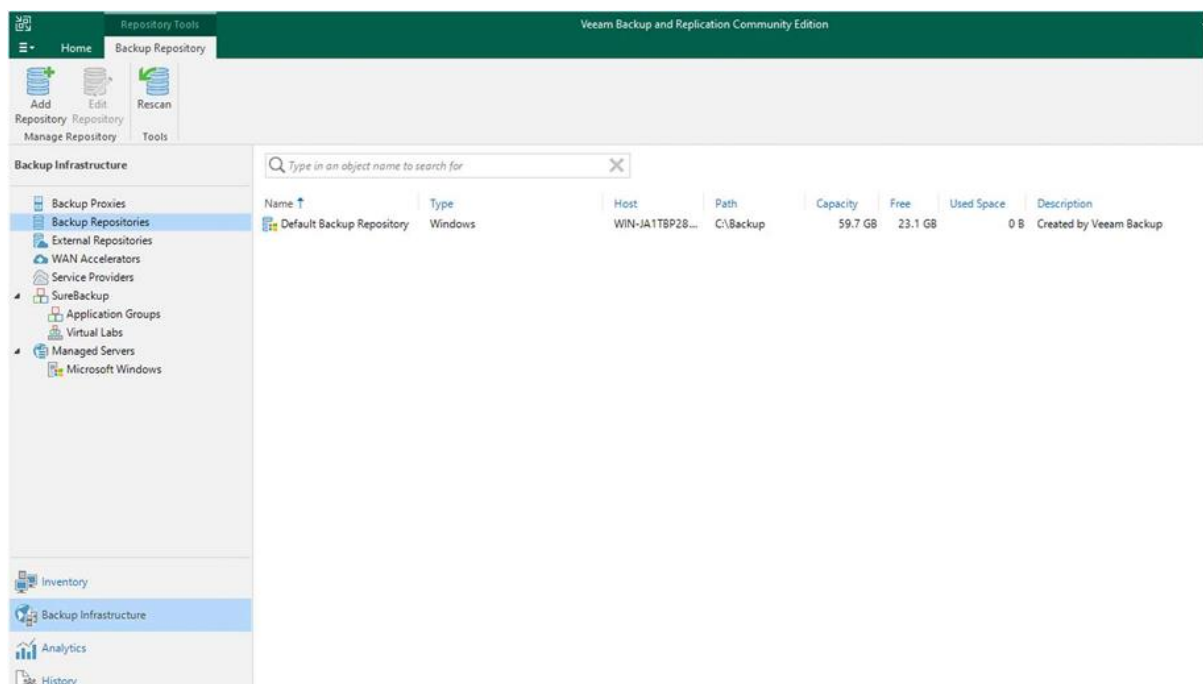
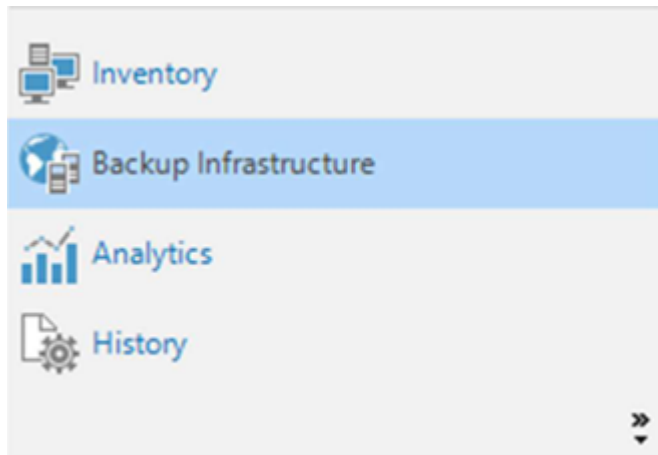
On sélectionne ensuite la première option « Install Veeam Backup and Replication »



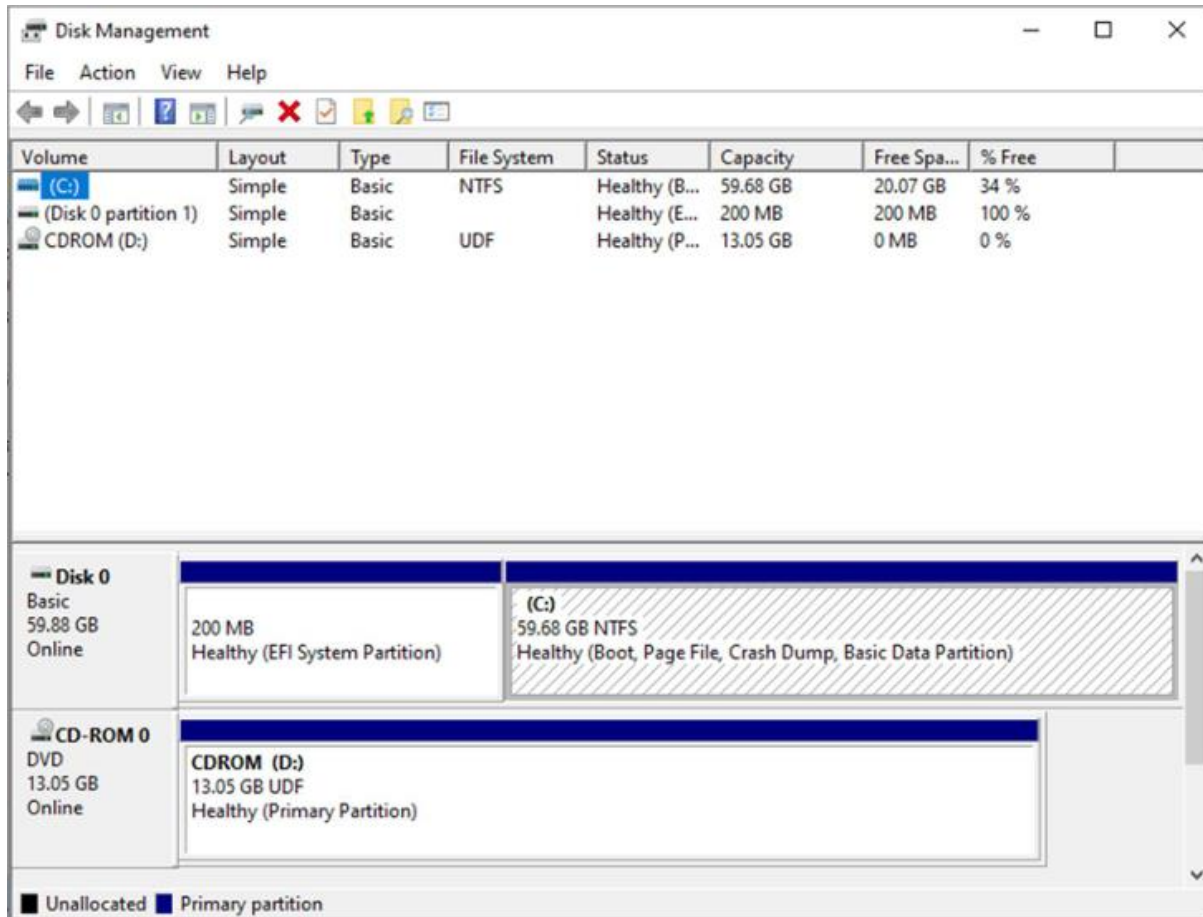


Configuration de Veeam:

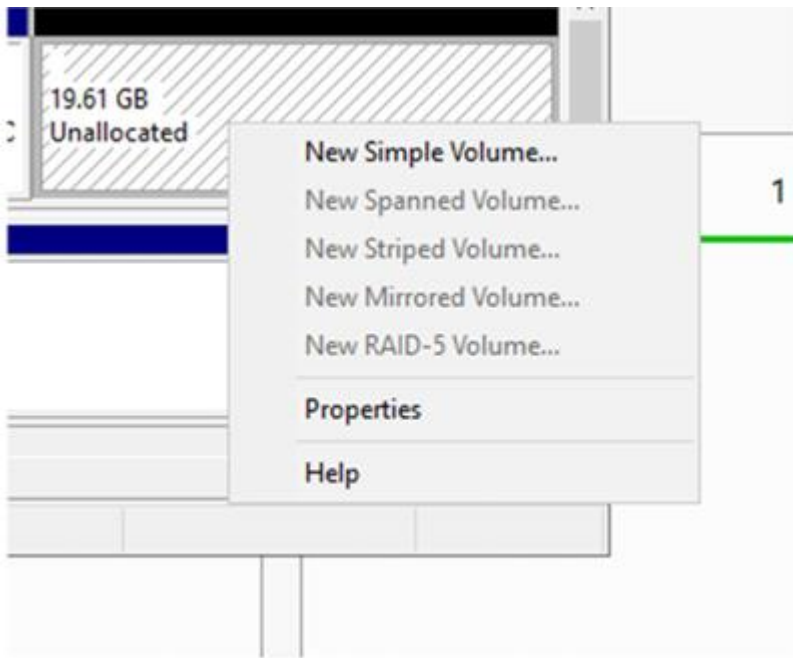




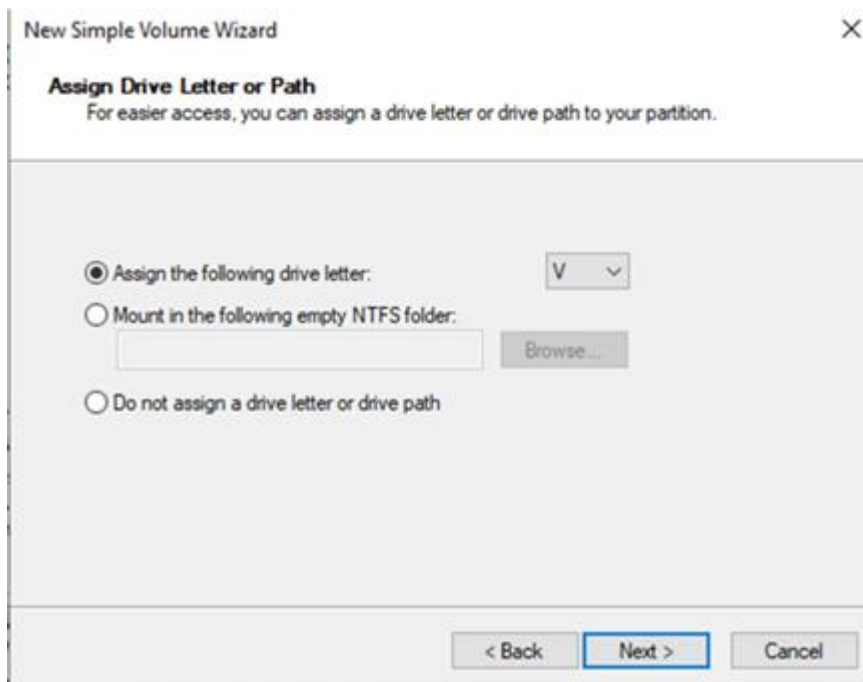
RDV ensuite dans « Backup Infrastructure » et « Backup repositories » afin de configurer une nouvelle destination pour nos sauvegardes



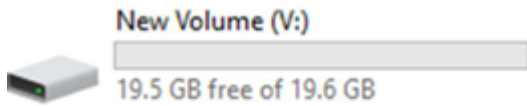
On va tout d'abord aller dans le disk manager afin de d'allouer un nouvel espace pour notre veeam



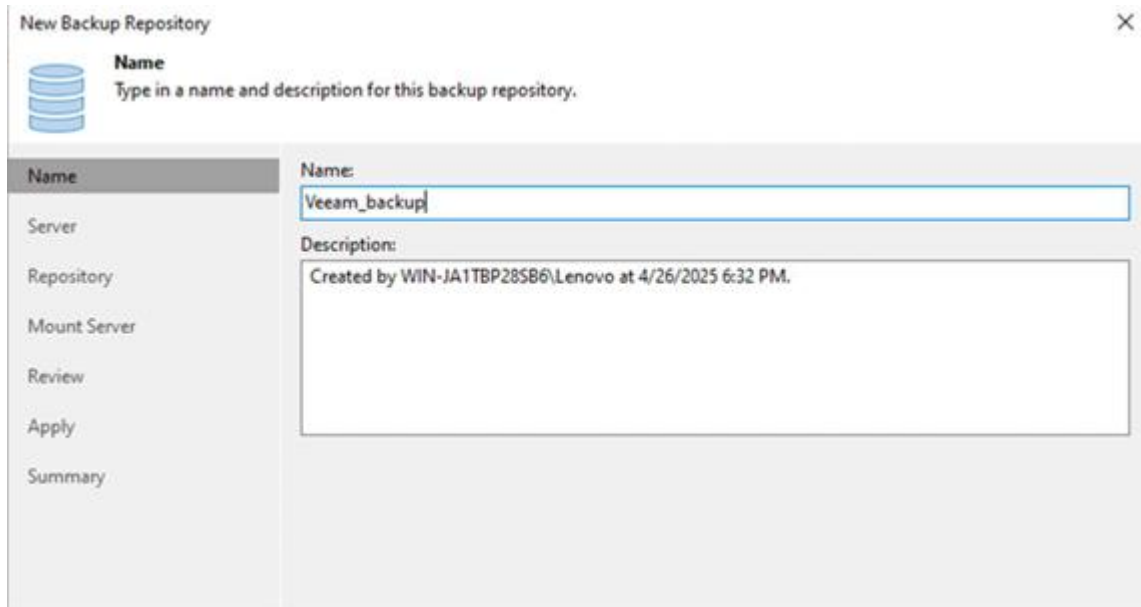
« New Simple Volume »



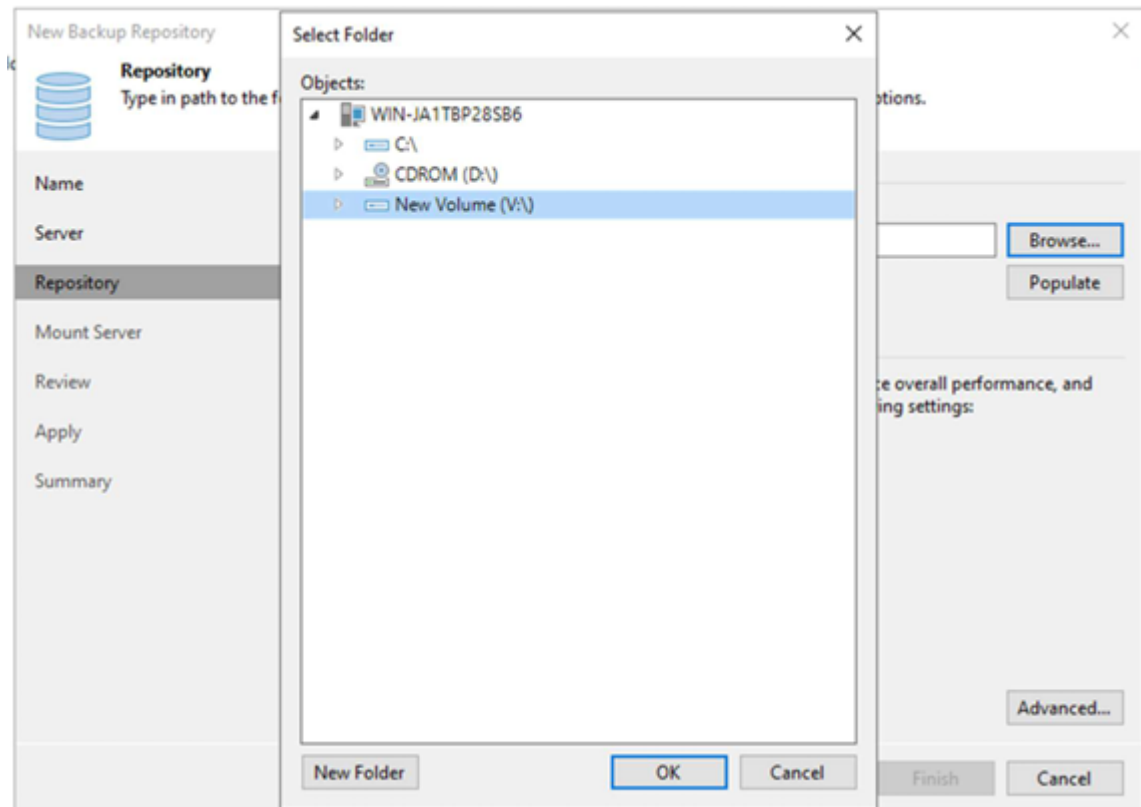
Je lui assigne la lettre « V » pour Veam



Notre nouveau lecteur V existe bel et bien !



On retourne ensuite dans notre Veeam et on crée un nouveau backup repository ou destination de sauvegarde. Je l'appelle ici « Veeam Backup »



Je lui assigne le chemin souhaité, soit celui vers mon nouveau lecteur

New Backup Repository

Repository
Type in path to the folder where backup files should be stored, and set repository load control options.

Name

Server

Repository

Mount Server

Review

Apply

Summary

Location

Path to folder: V:\ Browse...

Capacity: <Unknown> Populate

Free space: <Unknown>

Load control

Running too many concurrent tasks against the repository may reduce overall performance, and cause I/O timeouts. Control storage device saturation with the following settings:

Limit maximum concurrent tasks to: 1

Limit read and write data rate to: 1 MB/s

Click Advanced to customize repository settings. Advanced...

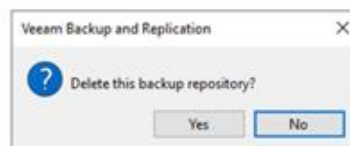
< Previous **Next >** Finish Cancel

New Backup Repository ✕

Apply
Please wait while backup repository is created and saved in configuration, this may take a few minutes.

Name	Message	Duration
Server	Starting infrastructure item update process	0:00:02
Repository	Discovering installed packages	
Mount Server	Registering client WIN-JA1TBP28SB6 for package vPower NFS	
Review	Registering client WIN-JA1TBP28SB6 for package Mount Server	
Apply	Registering client WIN-JA1TBP28SB6 for package VMware VDDK	
Summary	Registering client WIN-JA1TBP28SB6 for package Veeam Threat Hunter	
	Discovering installed packages	
	All required packages have been successfully installed	
	Detecting server configuration	
	Reconfiguring vPower NFS service	0:00:07
	Creating configuration database records for installed packages	
	Collecting backup repository info	
	Creating database records for repository	
	Backup repository has been saved successfully	

Name ↑	Type	Host	Path	Capacity	Free	Used Space	Description
Default Backup Repository	Windows	WIN-JA1TBP28...	C:\Backup	59.7 GB	23.1 GB	0 B	Created by Veeam Backup
Veeam_backup	Windows	WIN-JA1TBP28...	V:\	19.6 GB	18.5 GB	0 B	Created by WIN-JA1TBP28SB6\



Lorsque je le vois apparaître dans la liste de mes backup repositories, je peux alors supprimer celui par défaut

Sauvegarde sur une VM Rocky Linux:

```
Home X SRV-VEEAM X VM ROCKY WIKIJS X

I OK | Started Rule-based Manager for Device Events and Files.
      Starting Coldplug all udev Devices...
I OK | Finished Coldplug all udev Devices.
I OK | Reached target Network.
      Starting dracut initqueue hook...
I 2.1778471 vswnet3 vswnet3 virtual NIC driver - version 1.7.0.0-k-k-RP1
I 2.1827441 vswnet3 0000:03:00.0: # of Tx queues : 2, # of Rx queues : 2
I 2.2827161 vswnet3 0000:03:00.0 eth0: NIC link is up 10000 Mbps
I 2.2299531 vswnet3 0000:03:00.0 ens160: renamed from eth0
I 2.2332671 scsi host0: ata_piix
I 2.2394941 scsi host1: ata_piix
I 2.2390861 ata1: SATA max UDMA/33 cmd 0x1f0 ctl 0x2f6 bmdma 0x1060 irq 14
I 2.2483291 ata2: SATA max UDMA/33 cmd 0x170 ctl 0x376 bmdma 0x1060 irq 15
I 2.2518821 nvme nvme0: pci function 0000:05:00.0
I 2.2575191 nvme nvme0: 15.0/0 default/read/poll queues
I 2.2593351 nvme0n1: p1 p2
I 2.4113511 ata2.00: ATAPI: VMware Virtual IDE CDROM Drive, 00000001, max UDM
A/33
I 2.4181641 scsi 1:0:0:0: CD-ROM          RECOMar VMware IDE CDROM 1.00 PQ
: 0 ANSI: 5
I 2.4314651 scsi 1:0:0:0: Attached scsi generic sg0 type 5
I 2.4522901 sr 1:0:0:0: (sr0) scsi3-mmc drive: 1x/1x writer dvd-ram cd/rw xa/
form2 cdda tray
I 2.4522931 cdrom: Uniform CD-ROM driver Revision: 3.20
```

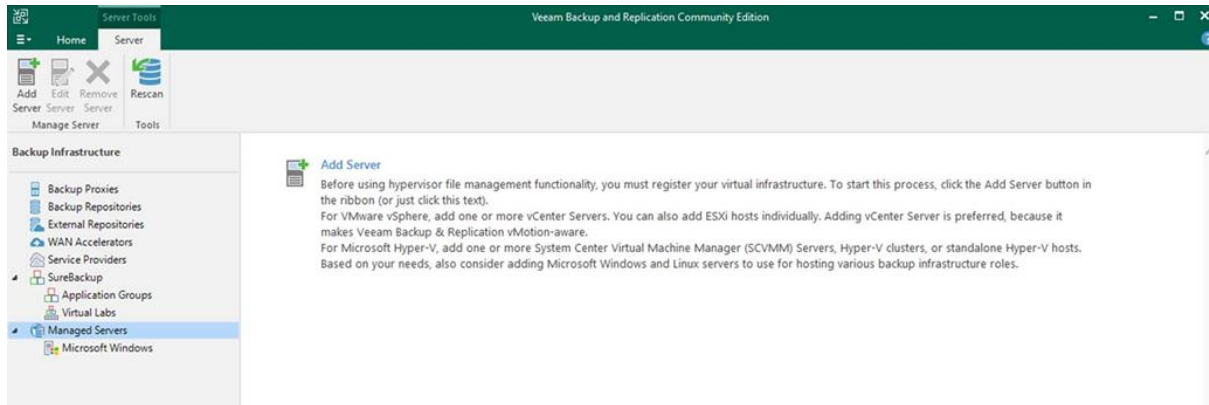
Pendant ce temps, je récupère une VM Rocky Linux (ici un wikijs)

```
Rocky Linux 9.1 (Blue Onyx)
Kernel 5.14.0-162.6.1.el9_1.x86_64 on an x86_64

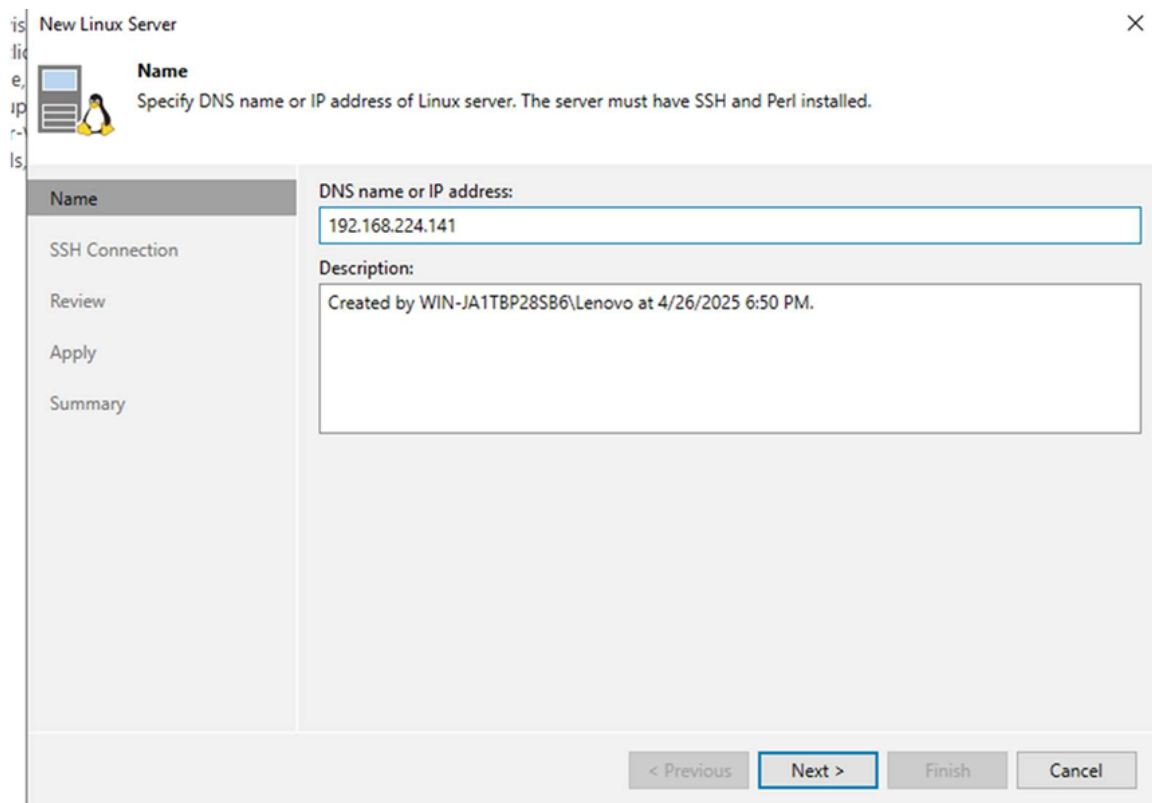
localhost login: ilham
Password:
Login incorrect

localhost login: ilham
Password:
Last failed login: Sat Apr 26 18:49:29 CEST 2025 on tty1
There was 1 failed login attempt since the last successful login.
Last login: Fri Oct 11 14:57:57 on pts/0
[ilham@localhost ~]$ ip a
1: lo: <LOOPBACK,UP,LOWER_UP> mtu 65536 qdisc noqueue state UNKNOWN group default qlen 1000
    link/loopback 00:00:00:00:00:00 brd 00:00:00:00:00:00
    inet 127.0.0.1/8 scope host lo
        valid_lft forever preferred_lft forever
    inet6 ::1/128 scope host
        valid_lft forever preferred_lft forever
2: ens160: <BROADCAST,MULTICAST,UP,LOWER_UP> mtu 1500 qdisc mq state UP group default qlen 1000
    link/ether 00:0c:29:61:02:65 brd ff:ff:ff:ff:ff:ff
    altname enp3s0
    inet 192.168.224.141/24 brd 192.168.224.255 scope global dynamic noprefixroute ens160
        valid_lft 1773sec preferred_lft 1773sec
    inet6 fe80::20c:29ff:fe61:265/64 scope link noprefixroute
        valid_lft forever preferred_lft forever
[ilham@localhost ~]$ _
```

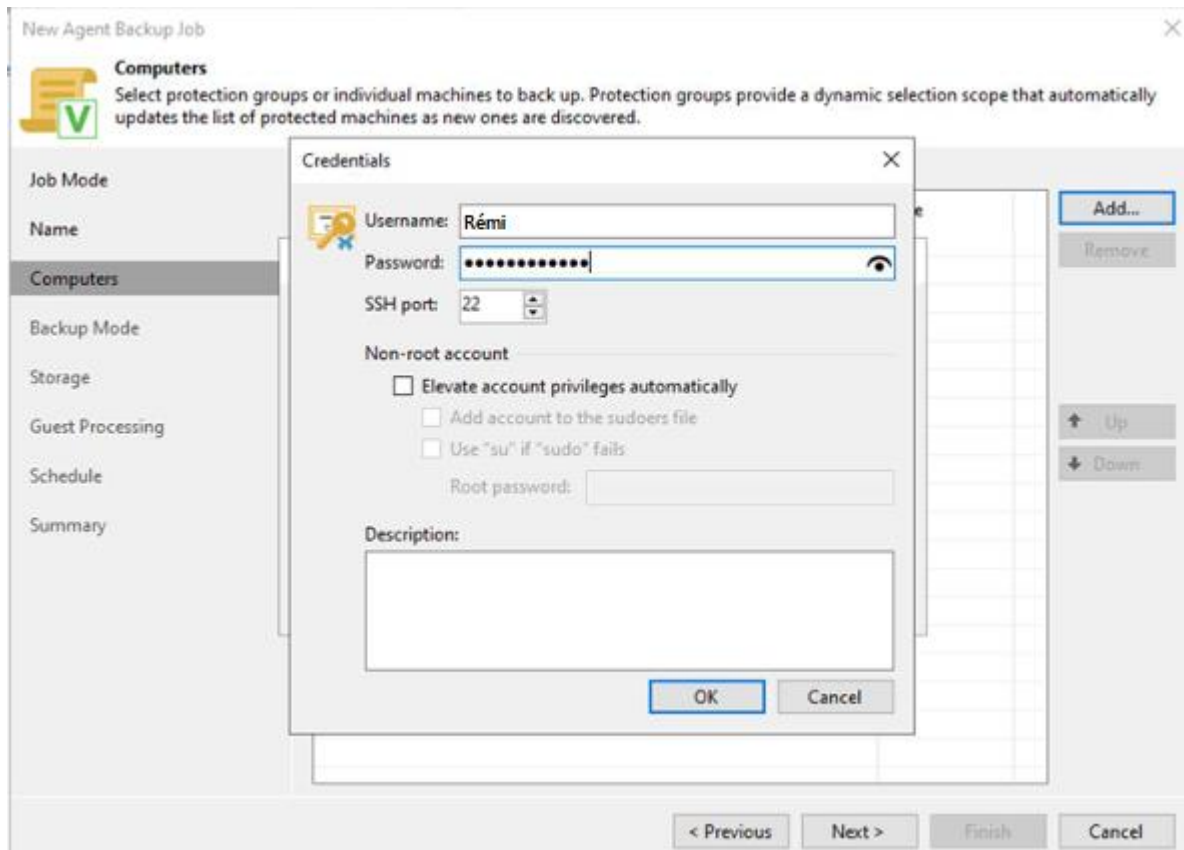
Je récupère son IP



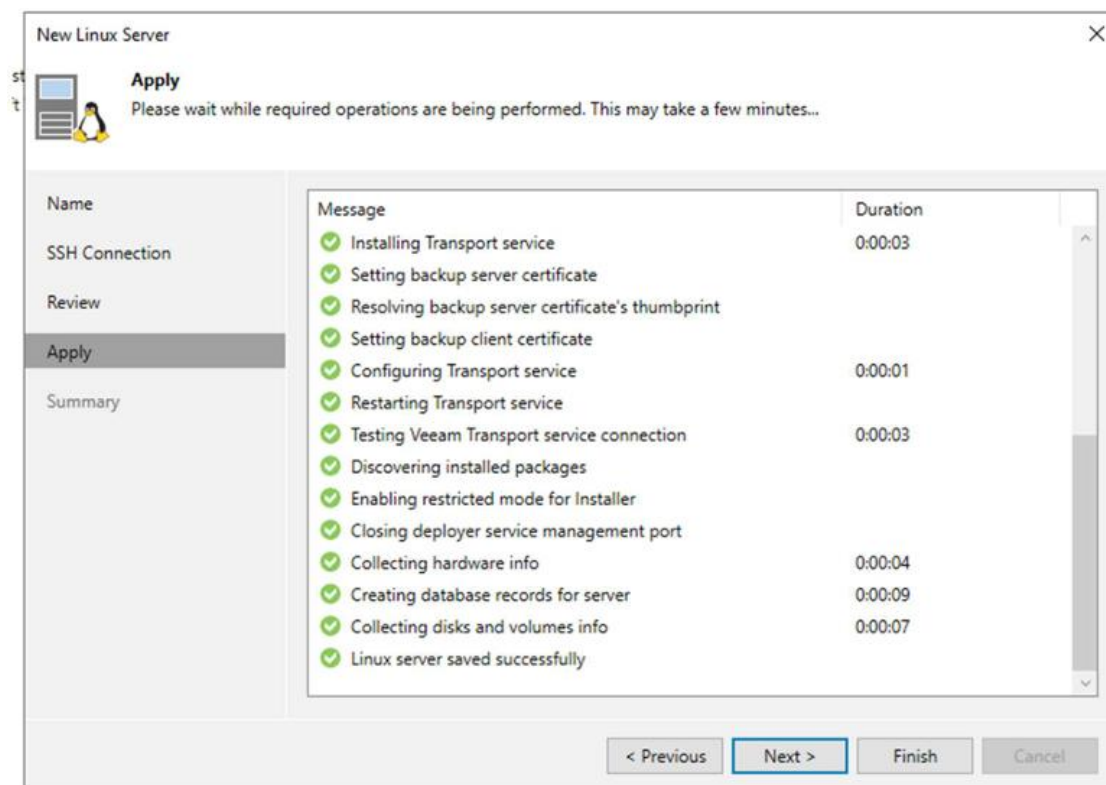
Je l'ajoute à mes « managed servers » dans mon Veeam, « Add Server » puis « New Linux Server »



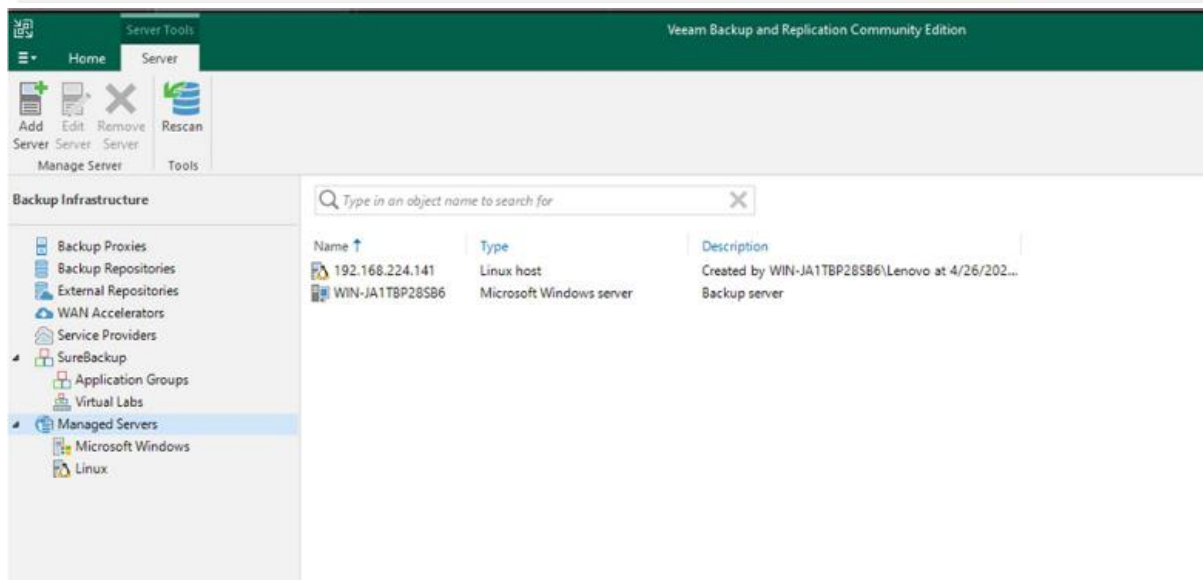
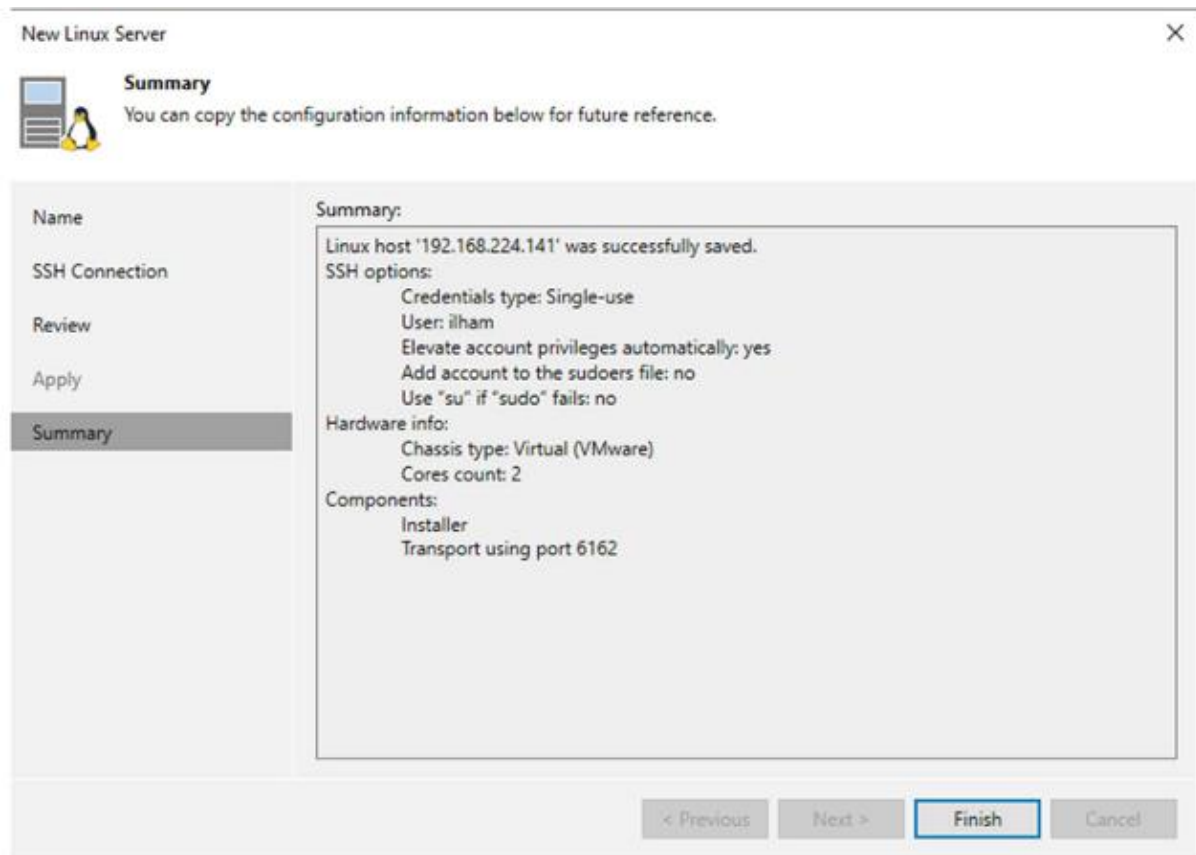
Je renseigne son IP



Ainsi que mes logins sur la VM Rocky



J'enregistre



Je le retrouve bien dans ma liste !

Stratégie de sauvegarde :

New Agent Backup Job



Name

Type in a name and description for this agent backup job.

Job Mode

Name

Computers

Backup Mode

Storage

Guest Processing

Schedule

Summary

Name:

Linux 1

Description:

Created by WIN-JA1TBP28SB6\Lenovo at 4/26/2025 6:59 PM.

High priority

Backup infrastructure resources are offered to high priority jobs first. Use this option for jobs sensitive to the start time, or jobs with strict RPO requirements.

< Previous

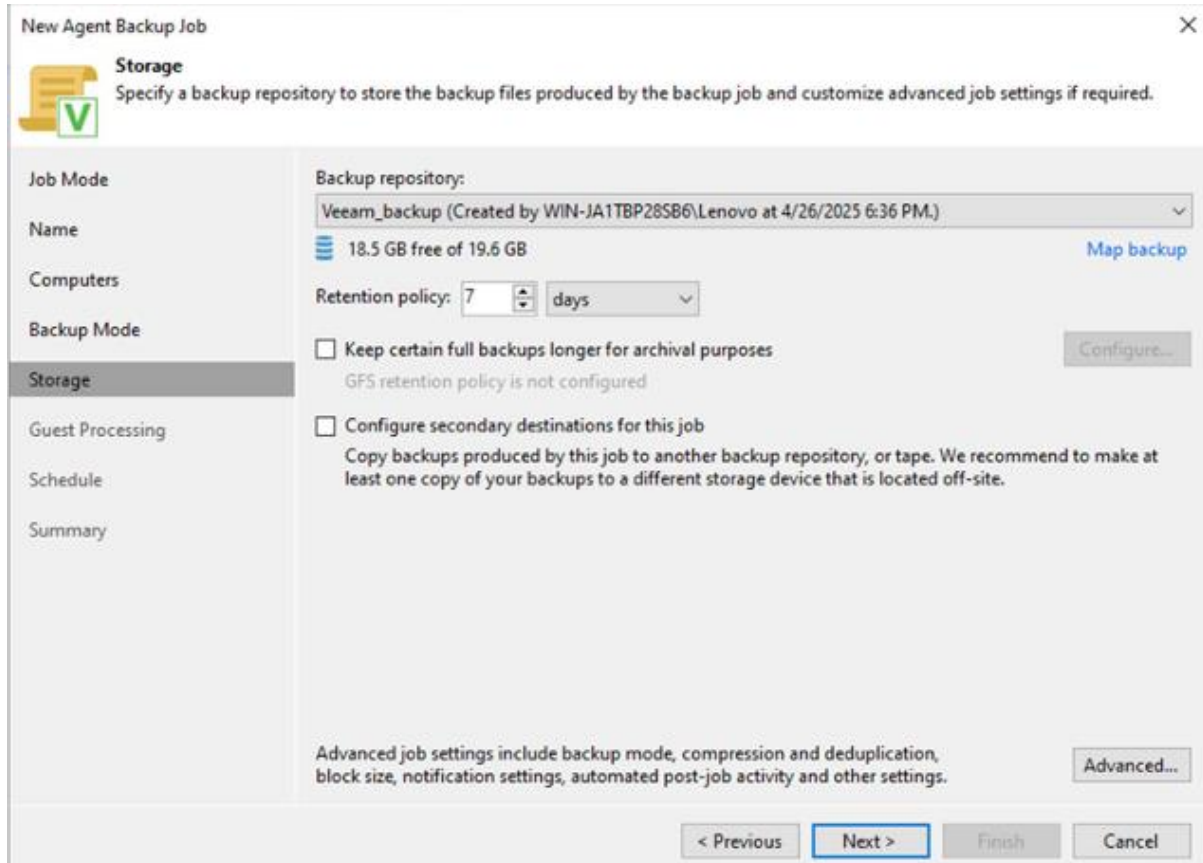
Next >

Finish

Cancel

Puis l'IP de ma machine

Je choisis combien de jours mes sauvegardes seront gardées (ici 7 mais tout dépend de la politique de sauvegarde de l'entreprise)



The screenshot shows the 'Storage' step of the 'New Agent Backup Job' wizard. The interface includes a sidebar with navigation options: Job Mode, Name, Computers, Backup Mode, Storage (selected), Guest Processing, Schedule, and Summary. The main area displays the following configuration options:

- Backup repository:** A dropdown menu showing 'Veeam_backup (Created by WIN-JA1TBP28SB6\Lenovo at 4/26/2025 6:36 PM.)' with a 'Map backup' button to its right.
- Storage usage:** A bar chart icon indicating '18.5 GB free of 19.6 GB'.
- Retention policy:** A numeric input field set to '7' and a dropdown menu set to 'days'.
- Advanced options:**
 - Keep certain full backups longer for archival purposes. A 'Configure...' button is visible to the right.
 - Configure secondary destinations for this job. Below this checkbox, text reads: 'Copy backups produced by this job to another backup repository, or tape. We recommend to make at least one copy of your backups to a different storage device that is located off-site.'

At the bottom of the wizard, there is a note: 'Advanced job settings include backup mode, compression and deduplication, block size, notification settings, automated post-job activity and other settings.' with an 'Advanced...' button. The bottom navigation bar contains buttons for '< Previous', 'Next >', 'Finish', and 'Cancel'.

Je choisis combien de jours mes sauvegardes seront gardées (ici 7 mais tout dépend de la politique de sauvegarde de l'entreprise)

New Agent Backup Job X

Schedule
Specify the scheduling options. If you do not set the schedule, the job will need to be controlled manually.

Job Mode

Run the job automatically

Daily at this time: 10:00 PM Everyday

Monthly at this time: 10:00 PM This day 1 Months...

Periodically every: 1 Hours Schedule...

After this job:

Automatic retry

Retry failed items processing: 3 times

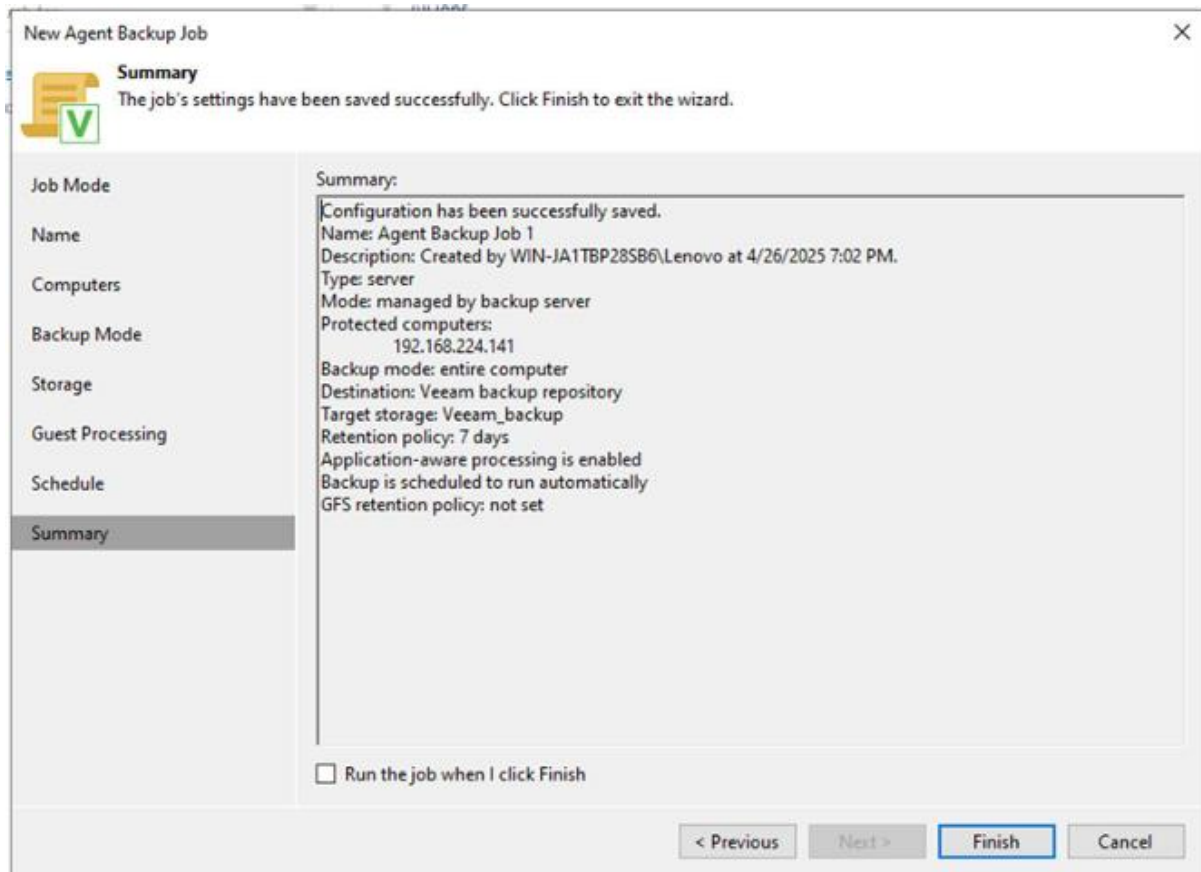
Wait before each retry attempt for: 10 minutes

Backup window

Terminate job outside of the backup window

Prevent long-running or accidentally started job from impacting your production infrastructure during the busy hours.

Je planifie la fréquence des sauvegardes (ici tous les jours à 10pm, mais tout dépend encore une fois de la politique de sauvegarde de l'entreprise)



Récapitulatif de ma stratégie de sauvegarde, puis « Finish »